



Kinugawa Turbo Systems

Universal Manual Adjustable Forged Wastegate Actuator and Spring

Thank you for purchasing this Kinugawa Turbo Systems™ product for your car! Installation of this product should only be performed by persons experienced with installation of aftermarket performance.

GENERAL MODIFICATION NOTE

Modifications to any vehicle can change the handling and performance. As with any vehicle extreme care must be used to prevent loss of control or roll-over during sharp turns or abrupt maneuvers. Always wear seat belts, and drive safely, recognizing that reduced speeds and specialized driving techniques may be required. Failure to drive a vehicle safely may result in serious injury or death. Do not drive a vehicle unless you are familiar with its unique handling characteristics and are confident of your ability to maintain control under all driving conditions. Some modifications (and combinations of modifications) are not recommended and may not be permitted in your state or country. Consult the owner's manual, service manual, instructions accompanying these products, and local laws before purchasing and installing these modifications. You are responsible for the legality and safety of the vehicle you modify using these components.

SPECIAL MODIFICATION NOTES

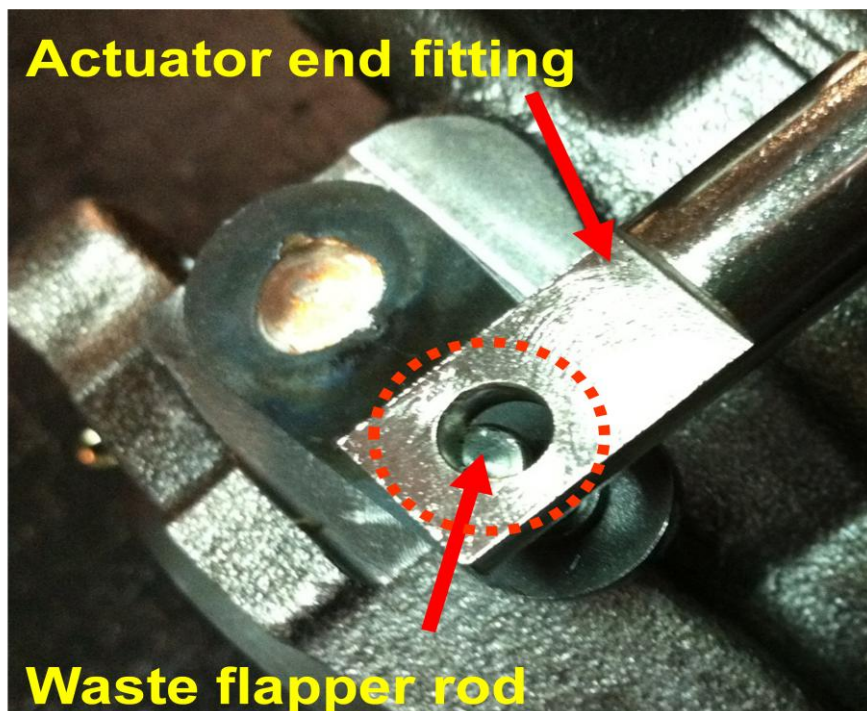
- **WARNING:** An accurate boost gauge is **required** for proper installation and adjustment of this product. Improper installation and use of this product will damage the turbocharger, engine and may result in injury or death! Kinugawa Turbo Systems™ is in no way responsible for any damages as a result of the installation of this product!
- Do not attempt to install without a boost gauge or an accurate way to read boost.
- Since the springs or boost controller can allow more boost, but it can exceed the power output your engine is designed for. This will lead to engine failure! Consult a professional tuner to decide which boost level is best for your engine.

INSTALLATION NOTES

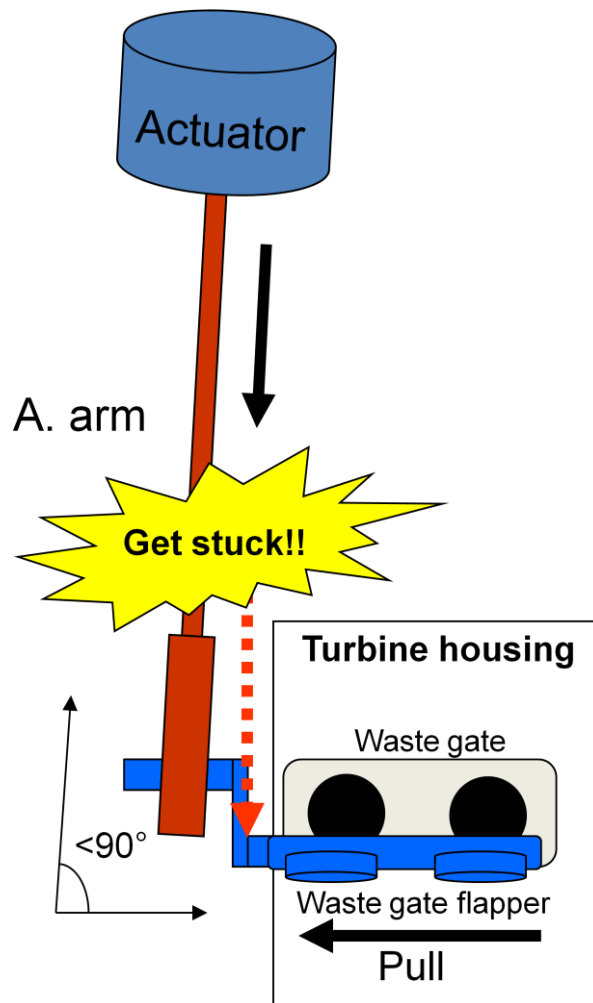
1. Please use a vise to hold the actuator arm before you install a new diaphragm into your actuator and make sure the actuator cap will not clip the edge of the diaphragm.



2. For insure the waste gate flapper will able to close tightly, please leave a half hole distance (our default is preload 1.5mm of full stroke) before you connect the "Actuator end fitting" and "Waste flapper rod", to pre-tense actuator spring.



3. Please to make sure the actuator arm and waste gate flapper rod have been well installed, and with a correct included angle (90 deg), otherwise the waste gate flapper might not able to close smoothly.



If it is possible, make sure the waste gate flapper is driven by actuator smoothly.

